

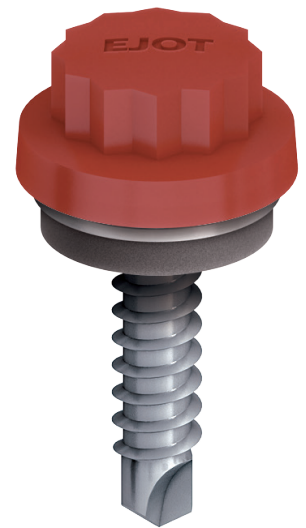
COLORFAST CF15/19/29 JT3-3-5.5 x L range

A2 stainless steel bi-met fastener for fixing roofing or cladding steel sheets or steel to steel from 1.2mm to 3.0mm in thickness.

Application Features

- For steel structures 1.2mm to 3.0mm in thickness
- Profiled steel and aluminium roofing and cladding sheets to light steel sections
- Available head options CF15, CF19 and CF29 aluminium/EPDM vulcanised sealing washers

*A29 washer excluded from 25mm length variant due to conflict of clamping range achievable



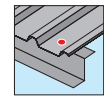
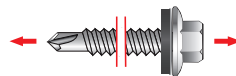
Material Specification

- High quality stainless steel grade A2 to ISO 3506, EN 1.4301 to ISO 10088, AISI 304
- Hardened carbon steel drill point and lead threads
- High impact resistant coloured nylon head. Resistant to temperatures from -40 °C to 120 °C. Colorfast nylon heads are combined with UV stabilisers to ensure maximum colour retention

Performance Details

Ultimate Fastener Tensile Strength

Fastener Diameter	kN
5.5 x L	11.50



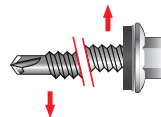
Drive Tool



Self-drilling fastener range

Ultimate Fastener Shear Strength

Fastener Diameter	kN
5.5 x L	7.50



Certifications

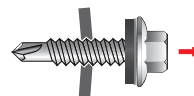


ETA-10/0200

Ultimate Pullout Load kN

Fastener Diameter	Nominal Steel Thickness (mm)					
	1.20	1.40	1.60	1.80	2.50	3.00
5.5 x L	2.10	2.79	3.37	3.98	6.40	7.82

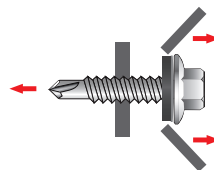
Figures based on tests from construction grade steel up to 3.0mm thick designated as S350GD (BS EN 10346), minimum yield strength 350 N/mm².



Ultimate Pullover Load kN

Washer Face	Nominal Steel Thickness (mm)		
	0.50	0.70	0.90
CF15 Head	5.10	5.75	6.00
CF19 Head	5.50	6.20	6.50

Figures based on use with R38 profile steel sheets with fastener located in valley of profile.



Figures shown on this data sheet are based on results obtained from tests carried out in EJOT UK's Applitec laboratory in accordance with equipment conforming to current industry standards, on a random sample of fasteners manufactured to EJOT tolerances. Information supplied should form part of a general guide and should performance data for a specific application be required please do not hesitate to contact us.