

GU threaded sleeve

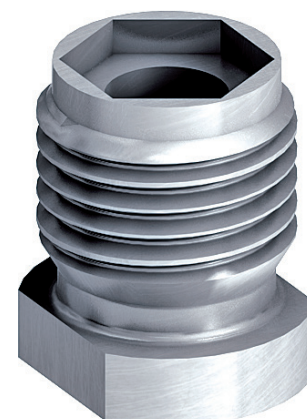
Universal scaffold anchor with an austenitic stainless steel threaded sleeve for use with the GU eyebolt for securing scaffolding during metal construction. Works when used in conjunction with the 3/8in head JZ3 and JA3 fasteners.

Application Features

- Can be extended to a universal scaffolding anchor GU
- Can be combined with all EJOT JA3 self-tapping screws with diameter 6.5mm
- Can be combined with all EJOT JA3 self-tapping screws with diameter 6.3mm
- For ring bolts M14

Material Specification

- A2 stainless steel
- Repeat use of GU-threaded sleeve possible
- Note: Effective length of universal scaffolding anchor GU + 20mm = length of required screw



Drive Tool



Self-tapping
fastener range

Figures shown on this data sheet are based on results obtained from tests carried out in EJOT UK's Applitec laboratory in accordance with equipment conforming to current industry standards, on a random sample of fasteners manufactured to EJOT tolerances. Information supplied should form part of a general guide and should not be taken as performance data for a specific application. If more performance data for a specific application be required please do not hesitate to contact us.