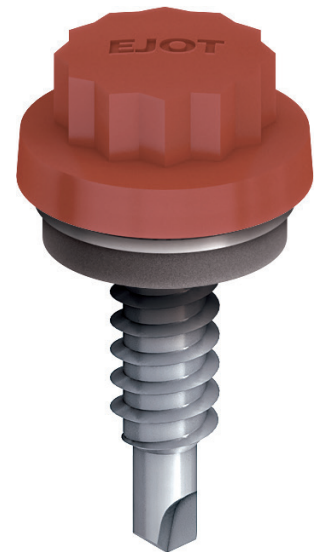


COLORFAST CF15/19 JT3-2-6.3 x L range

A2 stainless steel bi-met fastener for stitching roofing and cladding sheets and flashings.

Application Features

- Laps stitching of steel roofing and cladding sheets
- Laps stitching of aluminium roofing and cladding sheets
- Stitching of steel and aluminium flashings to roofing and cladding sheets
- Available head options CF15 and CF19 aluminium/EPDM vulcanised sealing washers
- Stitching 2 x 0.5mm up to 2 x 1.0mm



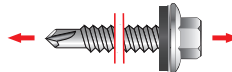
Material Specification

- High quality stainless steel grade A2 to ISO 3506, EN 1.4301 to ISO 10088, AISI 304
- Hardened carbon steel drill point and lead threads
- High impact resistant coloured nylon head. Resistant to temperatures from -40°C to 120°C. Colorfast nylon heads are combined with UV stabilisers to ensure maximum colour retention

Performance Details

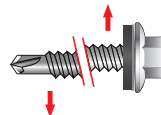
Ultimate Fastener Tensile Strength

Fastener Diameter	kN
6.3 x L	15.00



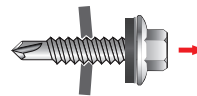
Ultimate Fastener Shear Strength

Fastener Diameter	kN
6.3 x L	9.00



Ultimate Pullout Load kN

Fastener Diameter	Nominal Steel Thickness (mm)		
	0.70	0.90	1.20
6.3 x L	1.35	2.50	3.26

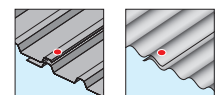
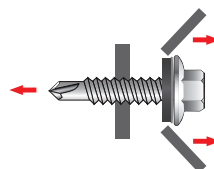


Figures based on tests from construction grade steel designated as S220GD (BS EN 10346), minimum yield strength 220 N/mm².

Ultimate Pullover Load kN

Washer Face	Nominal Steel Thickness (mm)		
	0.50	0.70	0.90
CF15 Head	5.10	5.75	6.00
CF19 Head	5.50	6.20	6.50

Figures based on use with R38 profile steel sheets with fastener located in valley of profile.



Drive Tool



Self-drilling fastener range

Figures shown on this data sheet are based on results obtained from tests carried out in EJOT UK's Applitec laboratory in accordance with equipment conforming to current industry standards, on a random sample of fasteners manufactured to EJOT tolerances. Information supplied should form part of a general guide and should performance data for a specific application be required please do not hesitate to contact us.