

# EJOT SAPHIR<sup>®</sup> Self-Drilling WDHS Range

## Ultimate Fastener Tensile Strength



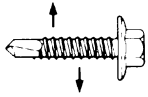
Fastener Dia	kN
5.5 x L	14.50

## Material Specification

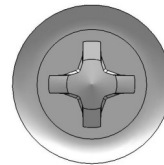
High quality grade casehardened carbon steel to Din standard 10666. Corrosion resistance finish in 'Climadur' organic coat.



## Ultimate Fastener Shear Strength

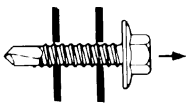


Fastener Dia	kN
5.5 x L	9.40



P3 Recess

## Ultimate Pullout Load kN

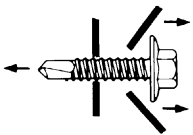


Fastener Dia	Steel Thickness (mm)				
	4.00	5.00	6.00	8.00	10.00
5.5 x L	9.00	11.40	14.50 *	-	-

\* Pullout load is limited by tensile strength of fastener at 6mm and above.

Figure based on steel designated as S275 (BS EN 10025), minimum yield strength

## Ultimate Pullover Load kN



Washer Face	Pull through of Countersunk Head from Construction Grade Timber SC3 (kN)
WDHS 65/85/119	5.00

Figures based on tests from construction grade timber and are average figures from pulls made from different surfaces relevant to grain of timber.

Figures above are based on results obtained from tests carried out in our Applitec lab in accordance with equipment conforming to BS 5427 on a random sample of fasteners manufactured to EJOT tolerances. Information supplied should form part of a general guide and should performance data for a specific application be required please do not hesitate to contact us.

EJOT UK Limited Sherburn-in-Elmet, Leeds LS25 6PB.  
Tel: 01977 687040 Fax: 01977 687041  
www.ejot.co.uk info@ejot.co.uk