

EJOT Self-[®] Tapping Stainless Steel Bi-Met Masonry Anchor Range

Ultimate Fastener Tensile Strength

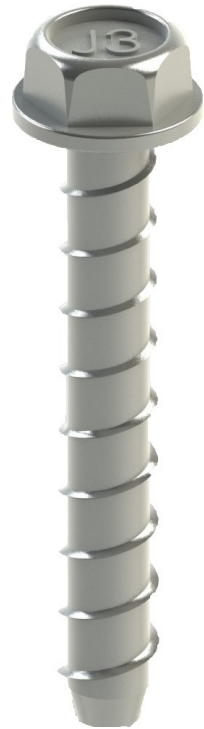


Fastener Dia	kN
7.5 x L	22.7

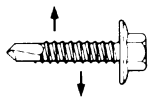
Material Specification

High quality 304 grade
Stainless Steel with
Alloy steel lead threads

10mm Hex drive

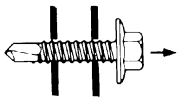


Ultimate Fastener Shear Strength



Fastener Dia	kN
7.5 x L	13.8

Typical Ultimate Pullout Loads in C20 Concrete kN



Fastener Dia.	Embedment (mm)
	30
7.5 x L	10.2

N.B. These figure are based on pullout from concrete designated as C20.

Please note these figures are for guidance only and should be confirmed by on-site pullout tests

Figures above are based on results obtained from tests carried out in our Applitec lab in accordance with equipment conforming to BS 5427 on a random sample of fasteners manufactured to EJOT tolerances. Information supplied should form part of a general guide and should performance data for a specific application be required please do not hesitate to contact us.

EJOT UK Limited Sherburn-in-Elmet, Leeds LS25 6PB.
Tel: 01977 687040 Fax: 01977 687041
www.ejot.co.uk info@ejot.co.uk