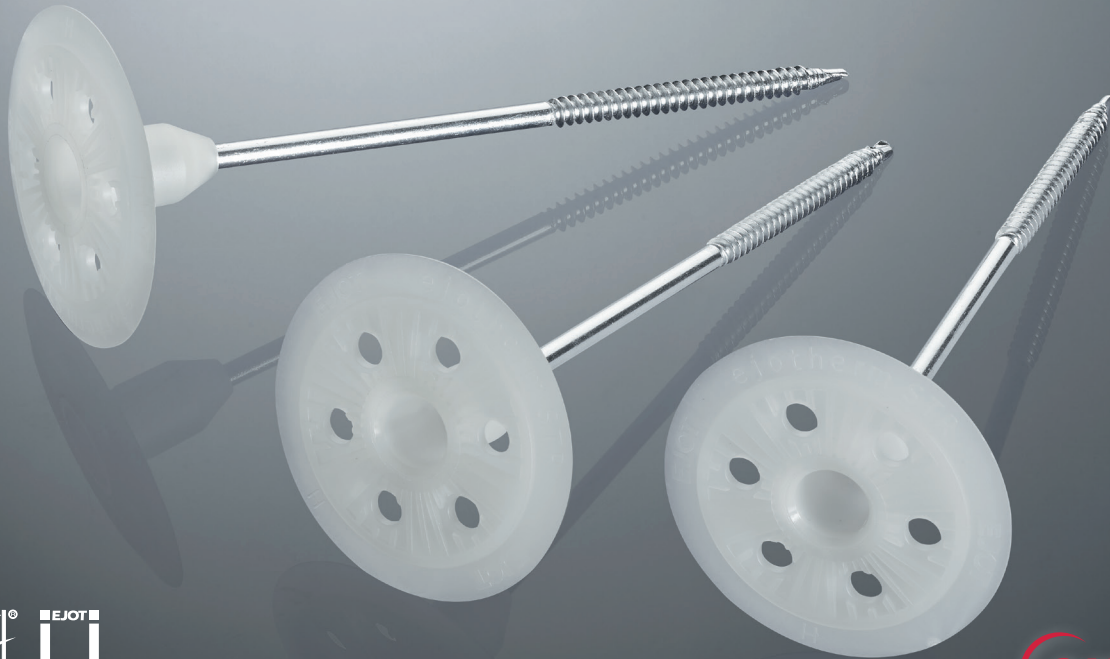




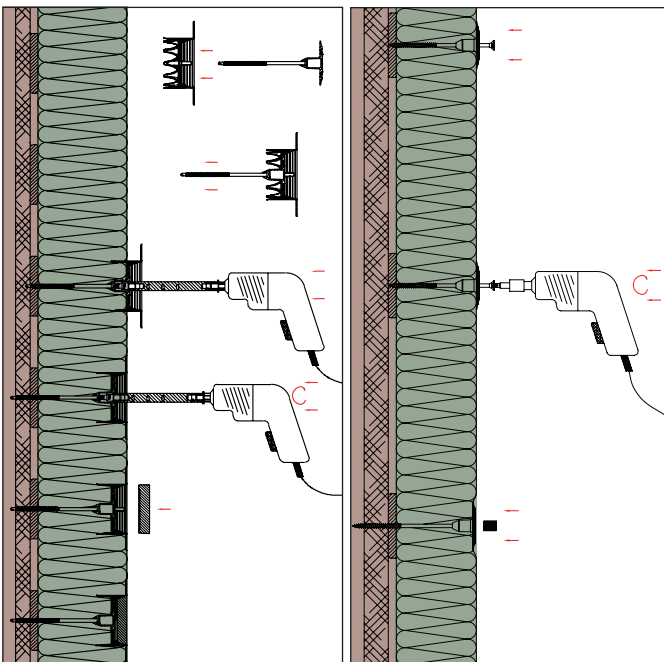
ejothem STR H A2

Stainless steel fastener for the corrosion-free fixing of ETICS to timber with German DIBt approval

Fastening of insulation boards



Installation:



Countersunk installation acc. to the STR principle with *ejothem* VT 2G and STR cap

Surface fixed installation with *ejothem* STR plug

Advantages:

- ❑ With German DIBt approval for fastening ETICS to timber substrates
- ❑ A2 stainless steel fastener with hardened drill point
- ❑ Corrosion-free fastening
- ❑ The EJOT STR principle with *ejothem* VT 2G and STR cap for homogeneous surfaces and even render in mineralwool insulation boards WAP-zg (type WV)
- ❑ No drilling necessary
- ❑ Surface fixed installation using STR plugs
- ❑ Permanent contact pressure
- ❑ 100% setting control: the countersunk installation of the washer indicates safe anchorage

ejotherm STR H A2

Stainless steel fastener for the corrosion-free fixing of ETICS to timber with German DIBt approval

Fastening of insulation boards

Technical Data

Screw diameter	6 mm
Washer diameter	60 mm
Screw drive	TORX T25
Point thermal transmittance χ Countersunk installation	0.001 W/K
Point thermal transmittance χ Surface fixed installation	0.002 W/K
DIBt approval	Z-9.1-822

Tensile strength from the substrate

Substrate type	Minimum screw-in depth	Designed load $F_{ax,90,RD}$
Solid wood, laminated timber, laminated beams or cross laminated timber made of softwood	35 mm or 24 mm (embedment)	0.94 kN
OSB boards	15 mm (thread engagement)	0.56 kN
Synthetic resin bonded chipboard	16 mm (thread engagement)	0.56 kN
Cement particle board	16 mm (thread engagement)	0.56 kN

Note: Detailed information about the substrates can be found in the German DIBt approval.

The options for structural fastening can be found in the technical data sheet.

Accessories

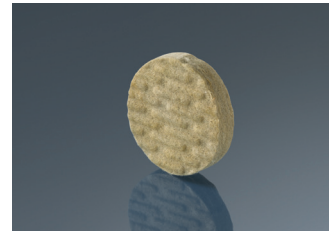
A broad range of accessories is available for the **ejotherm STR H A2** product group:

ejotherm VT 2G

Specific combination washer for countersunk installation in mineral wool insulation boards with low tensile strength WAP-zg (type WV)



ejotherm STR cap MW

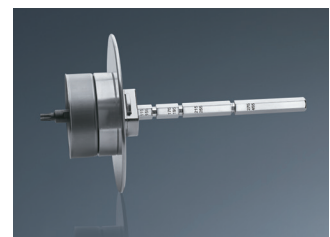


EJOT combination washer **VT 90** and **SBL 140 plus**



ejotherm STR-tool 2GS

Specially developed tool for countersunk installation



Product range

Countersunk installation* Insulation (mm)	Surface fixed installation Insulation (mm)	Product name and Length (mm)	Product code	Packaging unit (pieces)
-	40	ejotherm STR H A2 080	8711 080 666	100
-	60	ejotherm STR H A2 100	8711 100 666	100
80	80	ejotherm STR H A2 120	8711 120 666	100
100	100	ejotherm STR H A2 140	8711 140 666	100
120	120	ejotherm STR H A2 160	8711 160 666	100
140	140	ejotherm STR H A2 180	8711 180 666	100
160	160	ejotherm STR H A2 200	8711 200 666	100
180	180	ejotherm STR H A2 220	8711 220 666	100

**Please consult the respective system-/mineralwool approvals.*

Note: ejotherm STR H A2 is a combination of washer, fastener and plug. The screw is not pre-assembled. Always use in combination with ejotherm STR cap or enclosed plug respectively.